

COMUNE DI
PIANEZZA

PROGETTO DI
NUOVA DISTRIBUZIONE INTERNA
DI VILLA

TAV 3

PROGETTO

SOLUZIONE
3 UNITA' ABITATIVE

PIANTE
RAPP. 1/100

COMMITTENTE:
EMMEGIBI s.r.l.

PROGETTISTA:
ARCH. Carmine MINERVINO

LMA

LAUDI E MINERVINO ARCHITETTI ASSOCIATI-VIA VOLTURNO 6/A-10133 Torino - Tel. 011 19714537 - LAUDIMINERVINO@GMAIL.COM

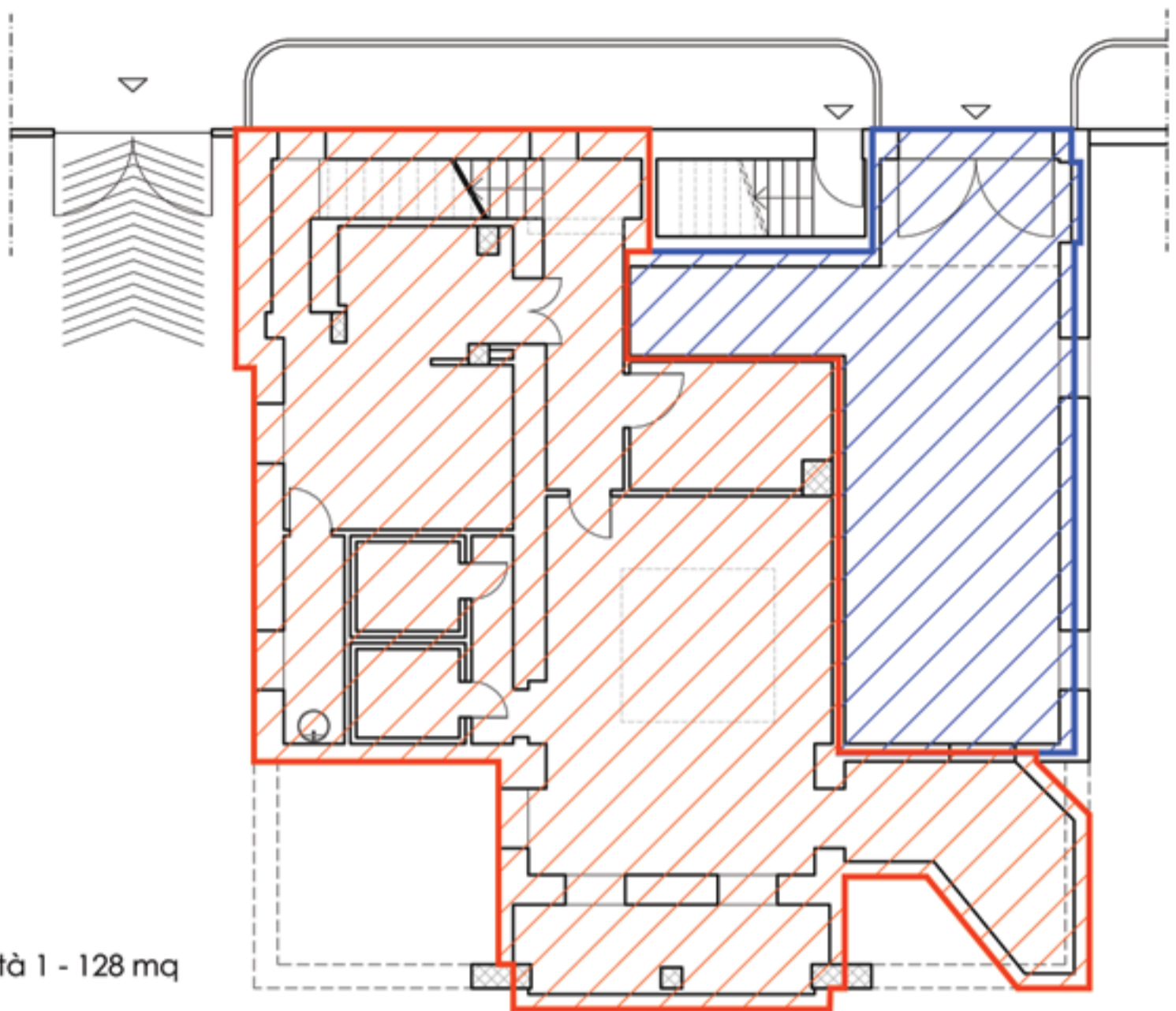
DATA :

MARZO 2011

AGG.:

SUPERFICIE UNITA' ABITATIVA 1 = 270 mq + 37.5 mq veranda
SUPERFICIE UNITA' ABITATIVA 2 = 173 mq + 13 mq balcone +
+ 37 terrazzo
SUPERFICIE UNITA' ABITATIVA 3 = 88.6 mq

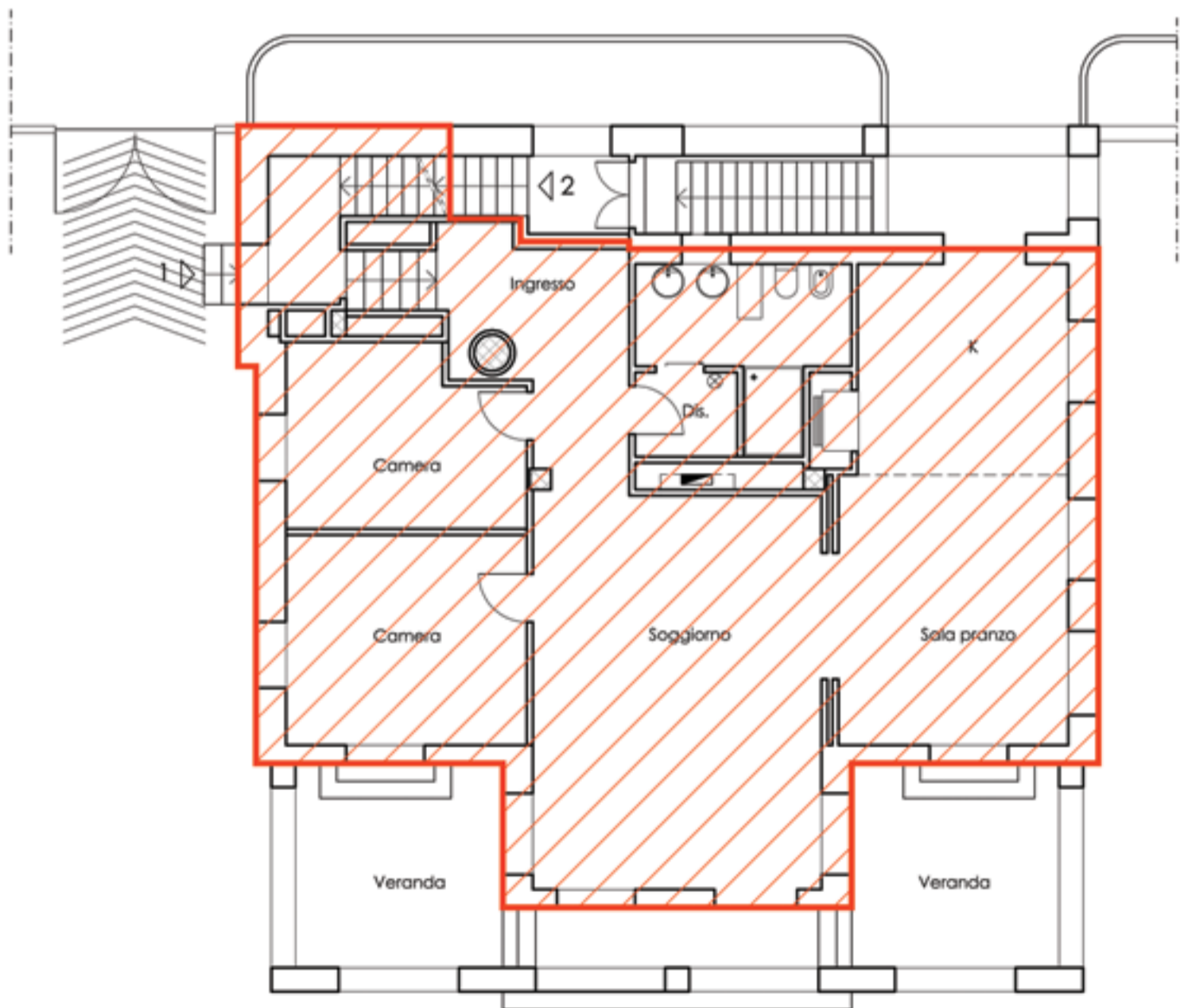
Piano Seminterrato




 Unità 1 - 128 mq

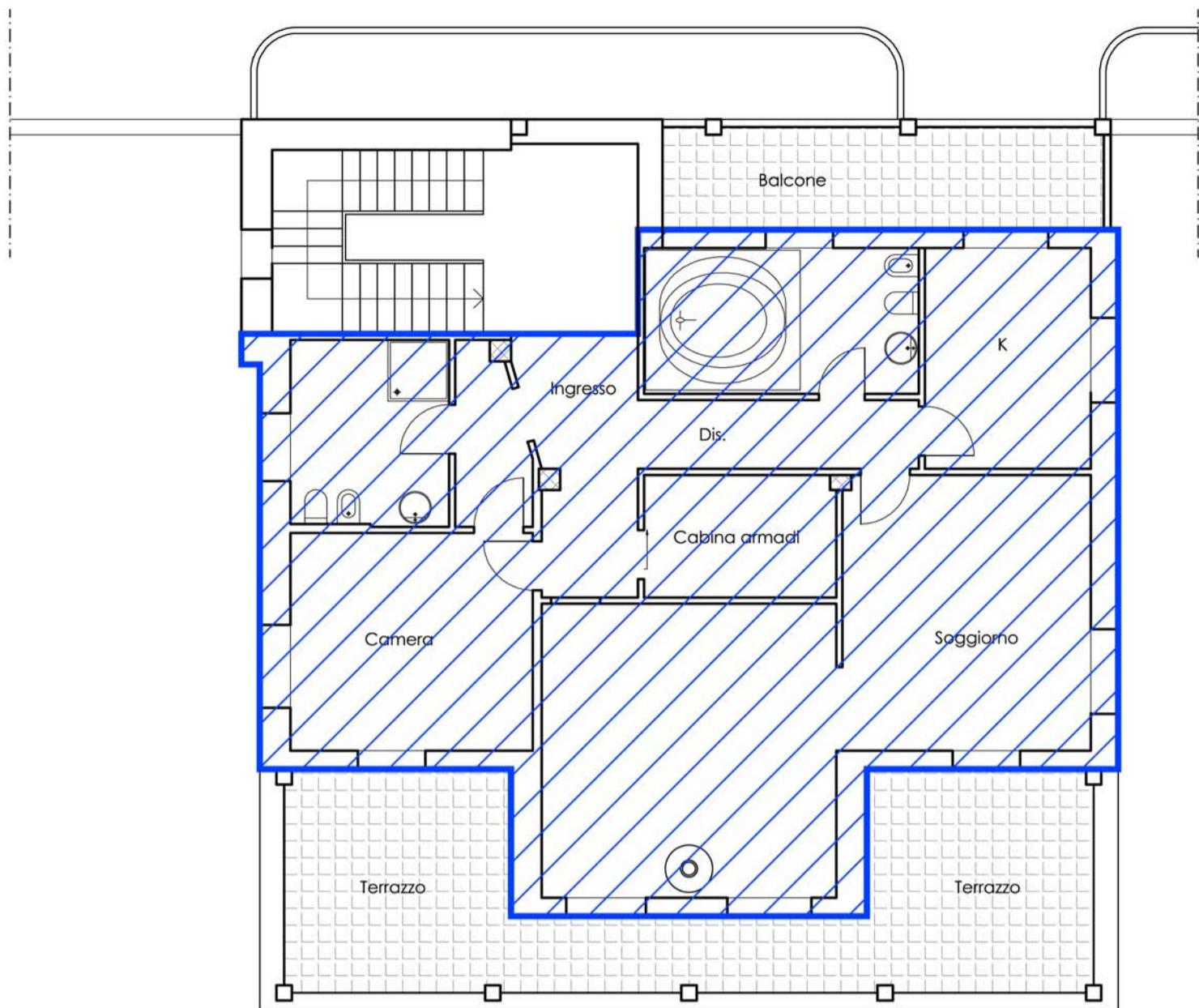
 Unità 2 - 46 mq

Piano Rialzato



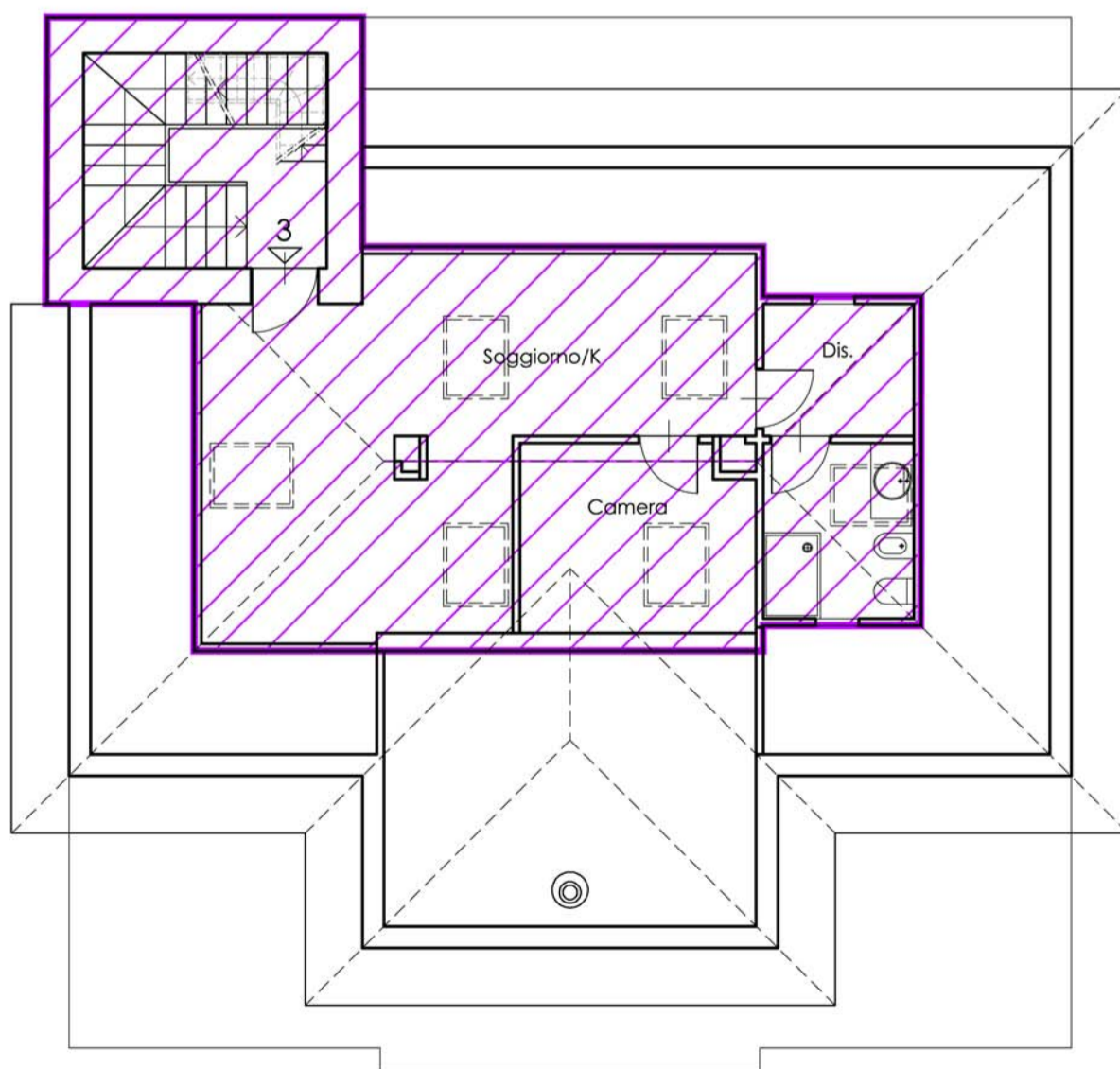
 Unità 1 - 142 mq
+37.5 mq veranda

Piano Primo

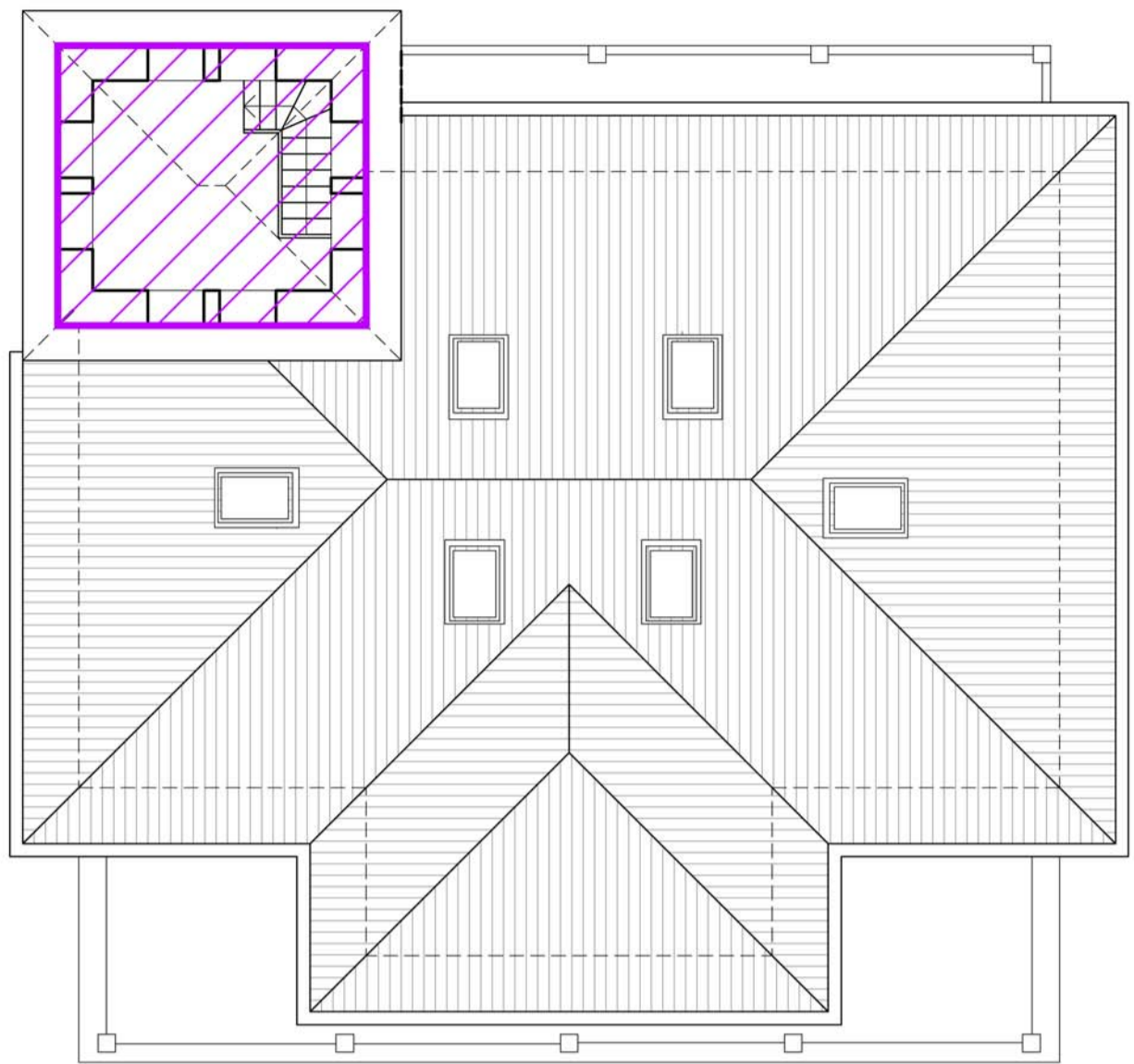


 Unità 2 - 127 mq
+ 13 mq balcone + 37 mq terrazzo

Piano Sottotetto



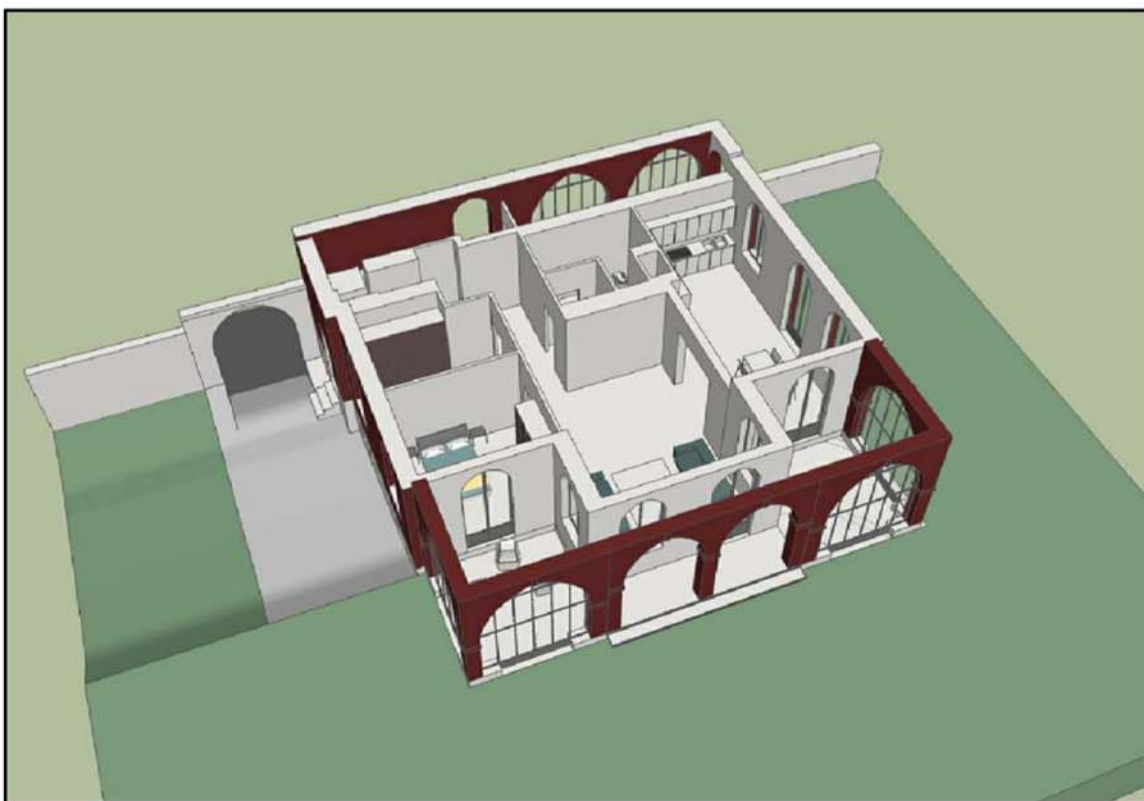
 Unità 3 - 71 mq



 Unità 3 - 17.60 mq



Vista piano rialzato



Vista piano rialzato